

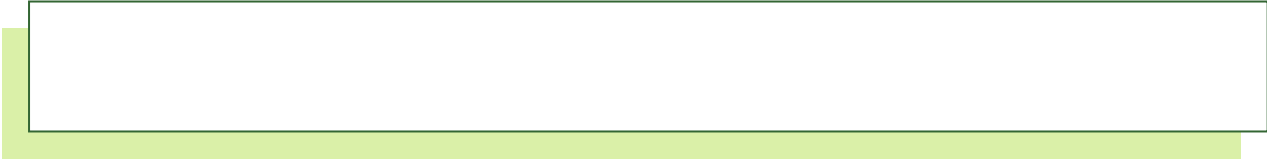


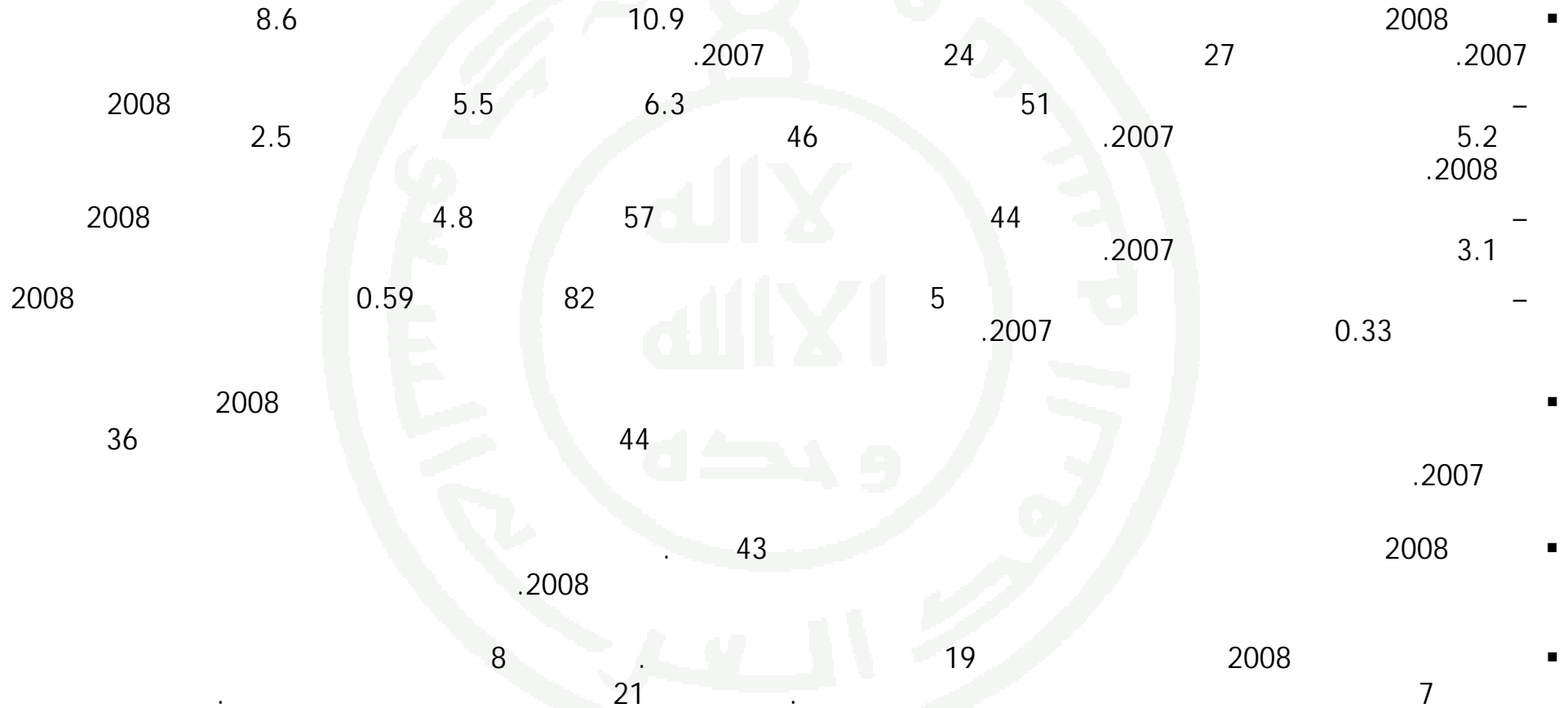
-

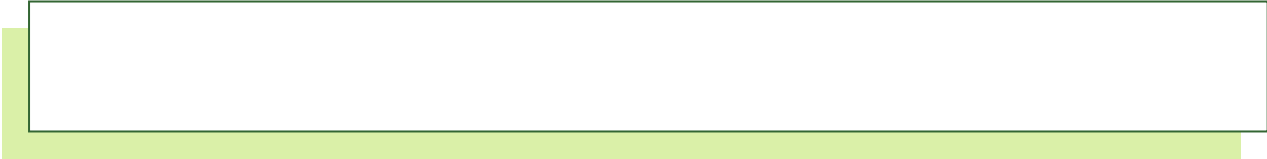
2008

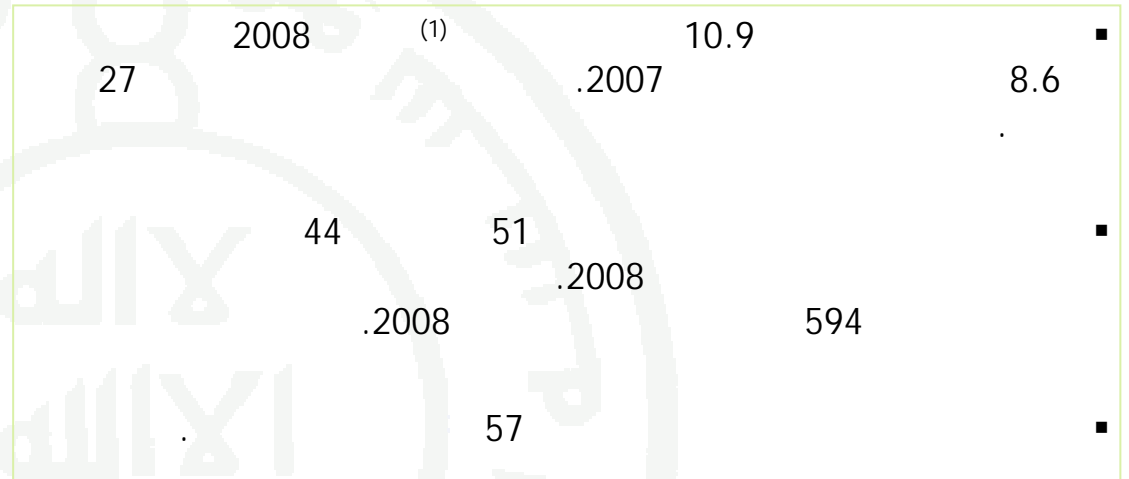
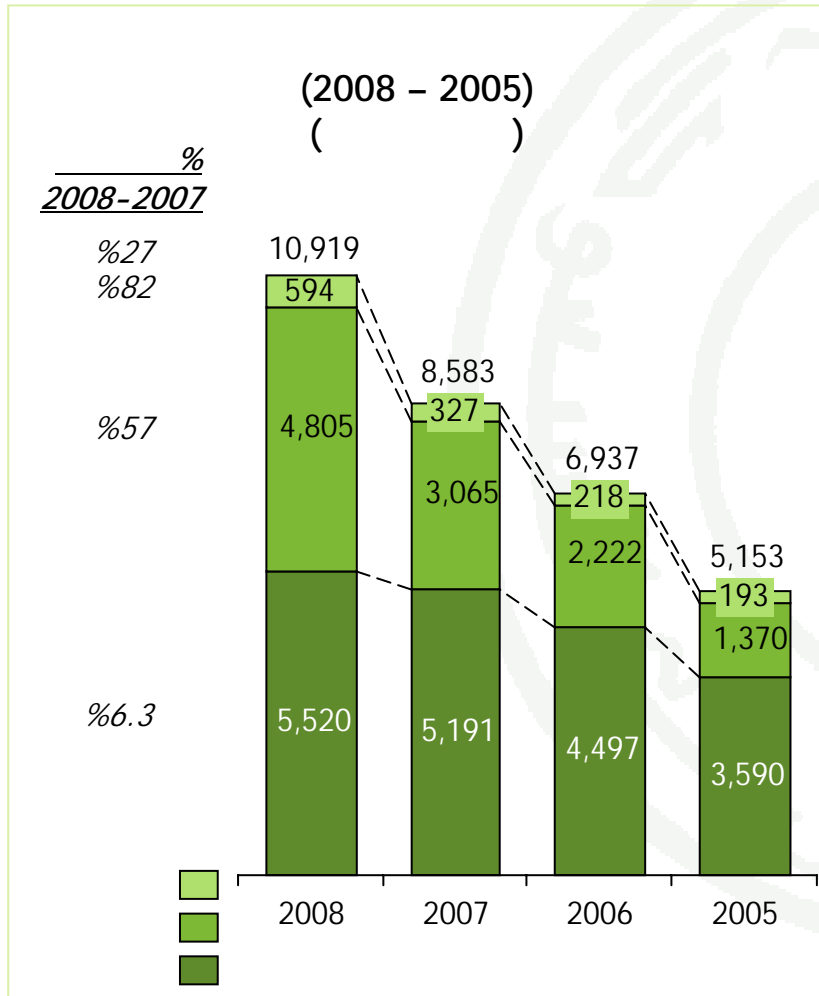


3				■
5	-			-
6				-
7	-			-
9	-			-
10.....				-
12				-
13				-
14				-
15				-
16				-
			:	■
18		:1		-
19		:3 2		-
20		:4		-
21		:5		-
22		:6		-
23		:7		-

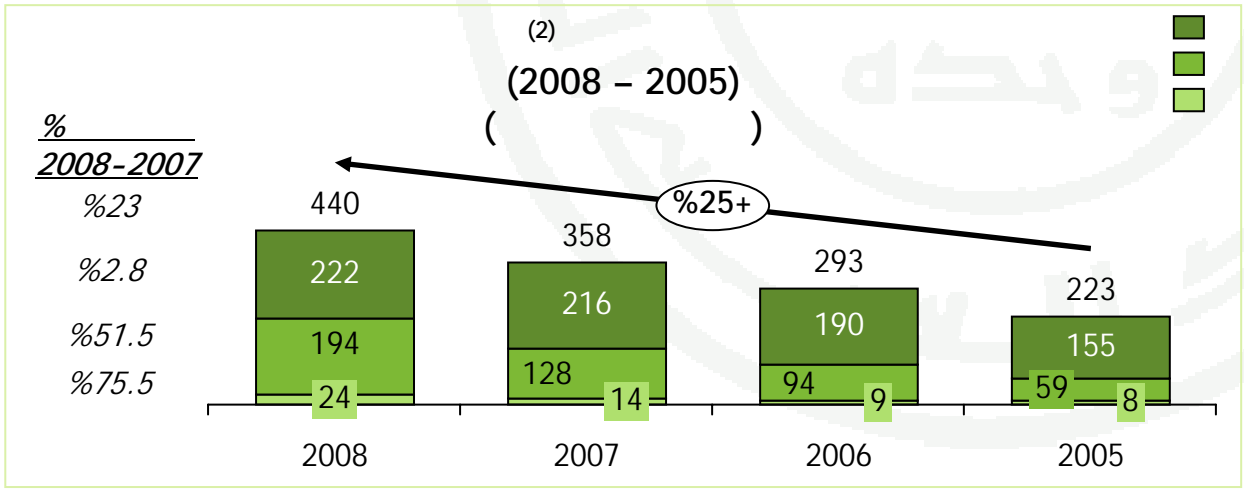
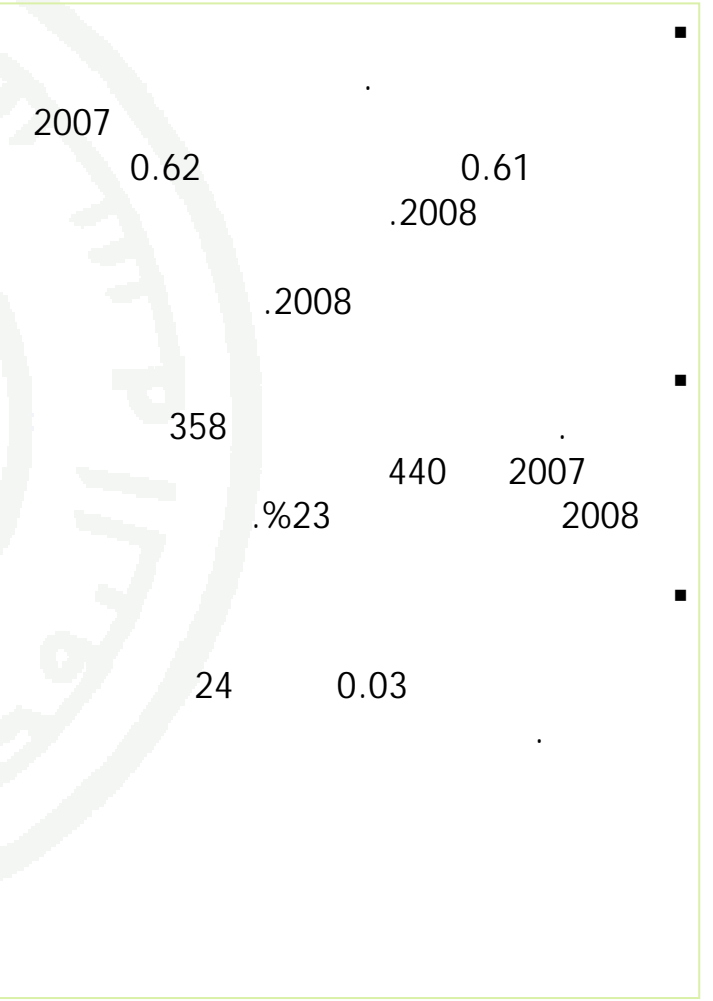
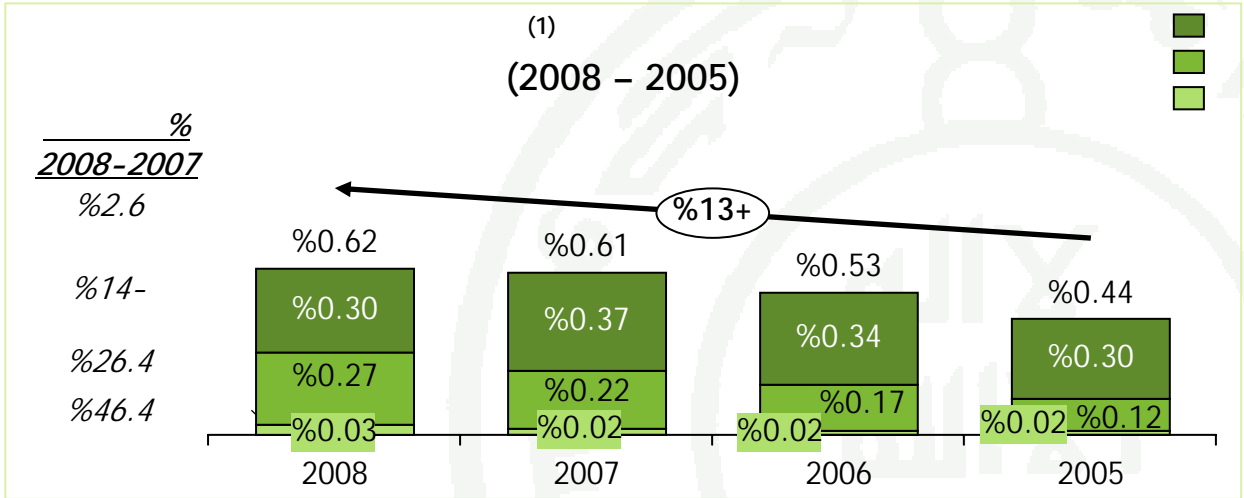








2008		2007		2006		2005		
%		%		%		%		
%5	594	%4	327	%3	218	%4	193	
%44	4,805	%36	3,065	%32	2,222	%26	1,370	
%51	5,520	%60	5,191	%65	4,497	%70	3,590	
%100	10,919	%100	8,583	%100	6,937	%100	5,153	



2008 2007 2006 2005
2008 2007 2006 2005

1735 1414 1308 1183
24.8 24 23.7 23.1
(2008)

(1)
(2)



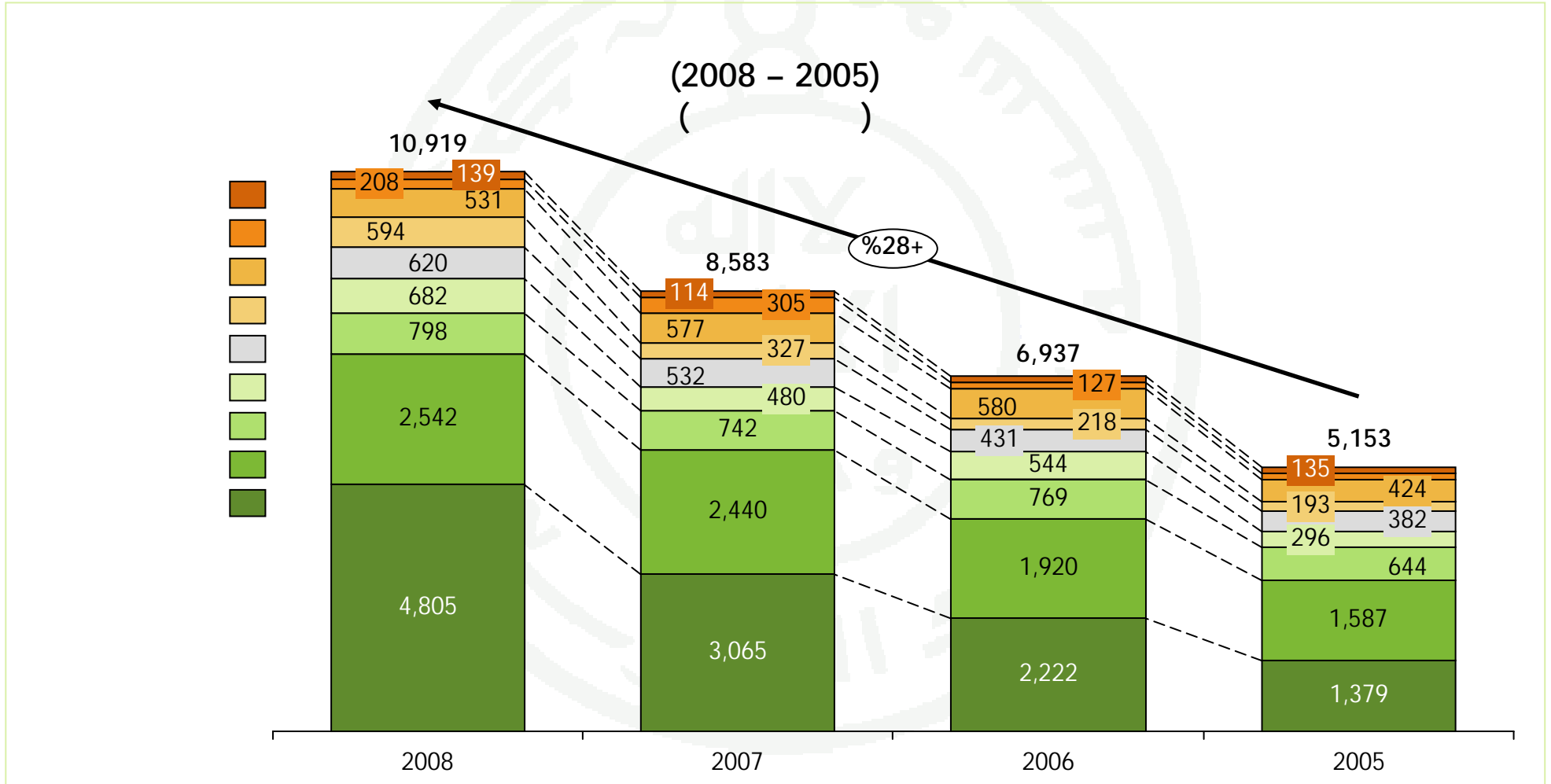
	2008		2007		2006		2005		
	%		%		%		%		
%08 - 07	%		%		%		%		
%57	%44	4,805	%36	3,065	%32	2,222	%26	1,370	
%4	%23	2,542	%28	2,440	%28	1,920	%31	1,587	
%8	%7	798	%9	742	%11	769	%13	644	
%42	%6	682	%6	480	%8	544	%6	296	
%17	%6	620	%6	532	%6	431	%7	382	
%82	%5	594	%4	327	%3	218	%4	193	
%8-	%5	531	%7	577	%8	580	%8	424	
%32-	%2	208	%4	305	%2	127	%2	122	
%21	%1	139	%1	114	%2	126	%3	135	
%27	%100	10,919	%100	8,583	%100	6,937	%100	5,153	

67	2008	■
	2008	■
	44	
.2007	36	
23	2008	
		■
	57	82
	8	4
32	8	



()

-

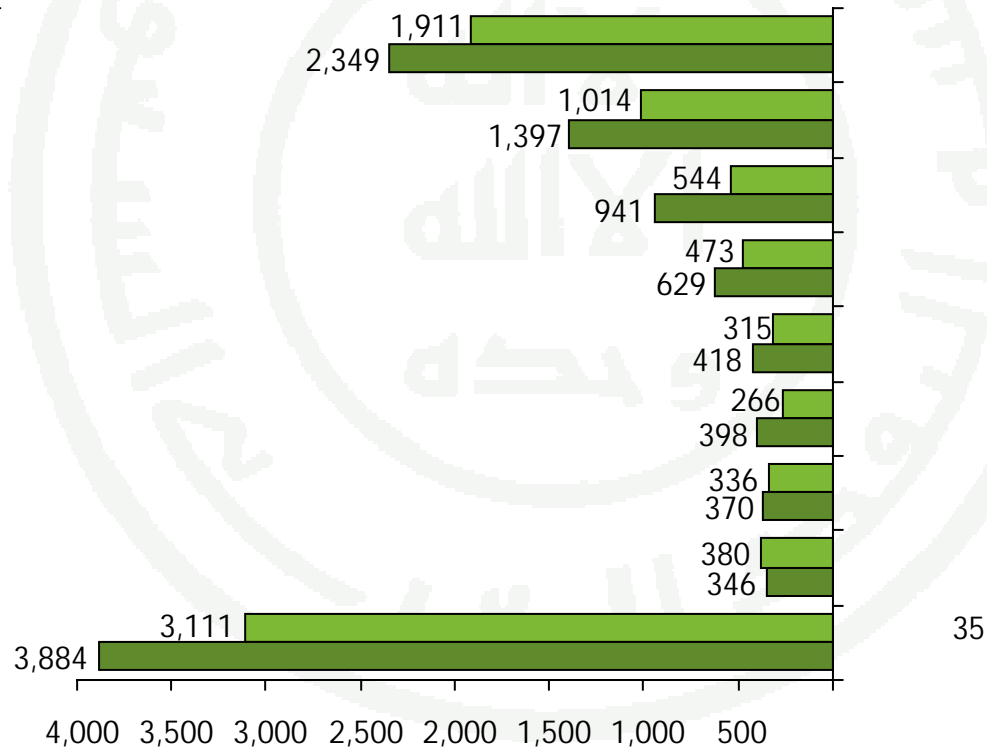




(2008 - 2005)
()

2008	2007
%21.9	%22.3
%13.0	%11.8
%8.8	%6.3
%5.9	%5.5
%3.9	%4.4
%3.7	%3.9
%3.4	%3.7
%3.2	%3.1
%36.2	%39.0

%63.8



2008 ■

63.8

61 .2007

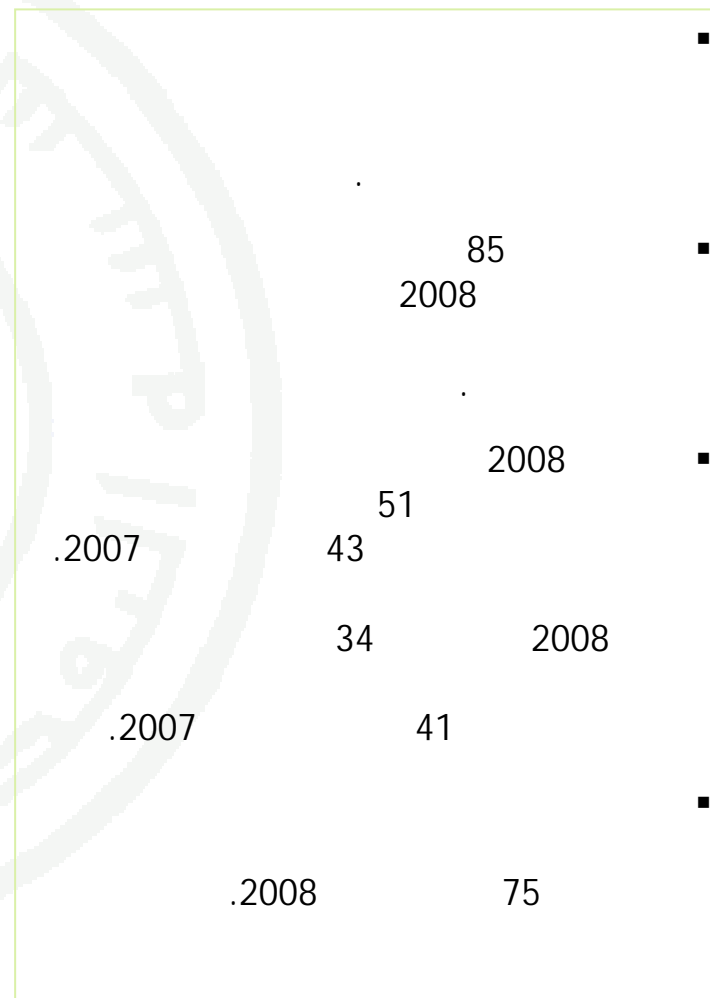
36.2

35

2007 ■
2006 ■

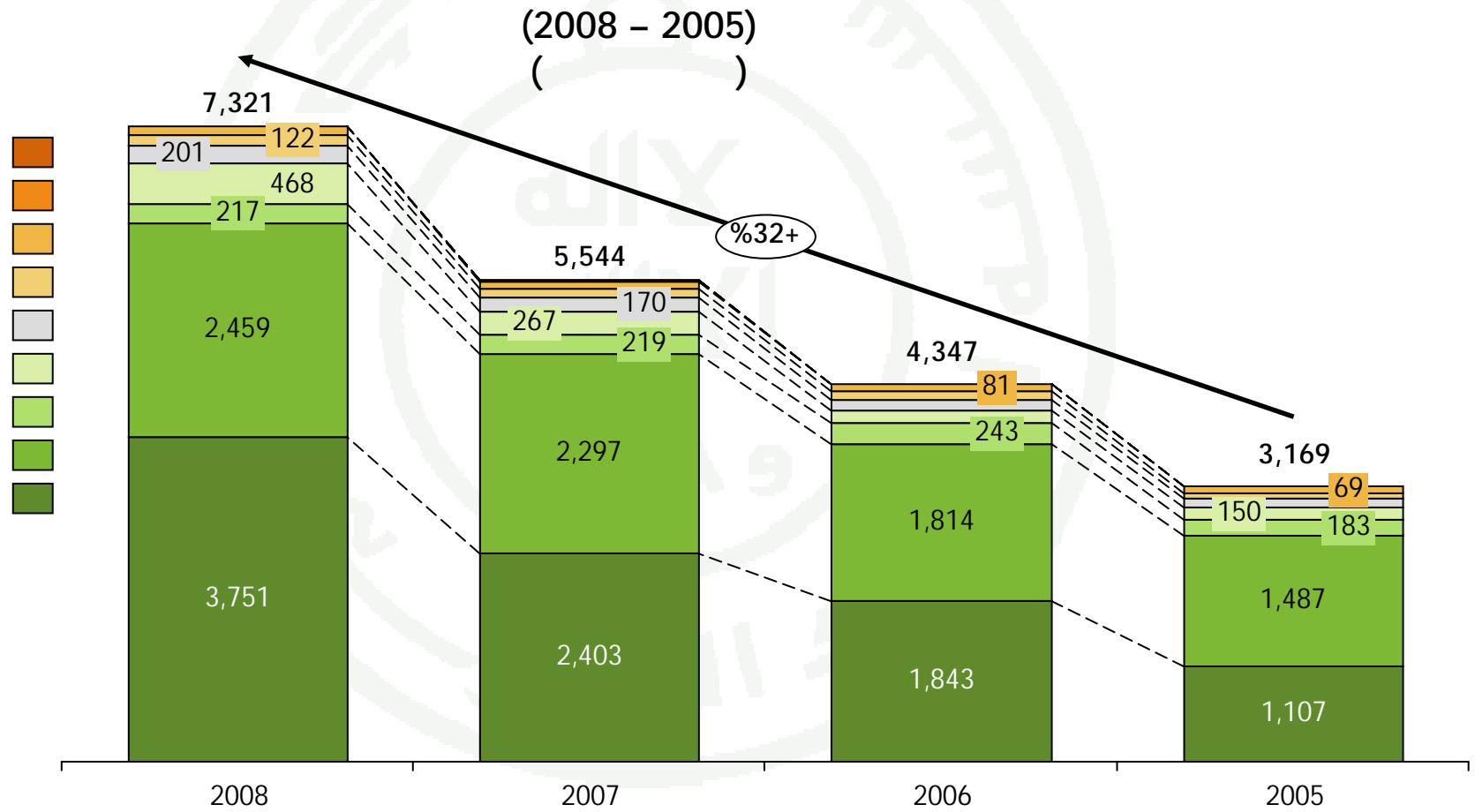


	2008		2007		2006		2005		
	%		%		%		%		
%08 - 07	%		%		%		%		
%56	%51	3,751	%43	2,403	%42	1,843	%35	1,107	
%7	%34	2,459	%41	2,297	%42	1,814	%47	1,487	
%1-	%3	217	%4	219	%6	243	%6	183	
%75	%6	468	%5	267	%4	153	%5	150	
%19	%3	201	%3	170	%3	124	%4	113	
%25	%2	122	%2	98	%2	84	%2	57	
%13	%1	95	%2	84	%2	81	%2	69	
%54	%	6	%	4	%	4	%	4	
%16-	%	1	%	2	%		%		
%32	%100	7,321	%100	5,544	%100	4,347	%100	3,169	



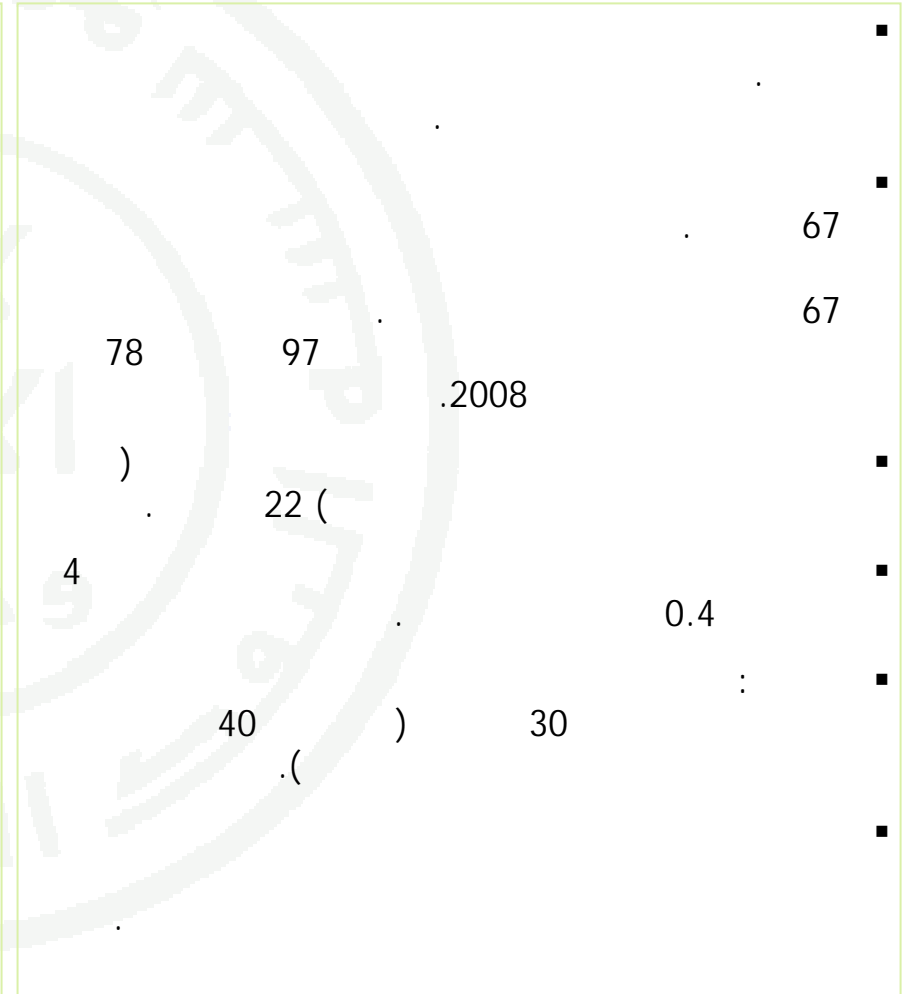
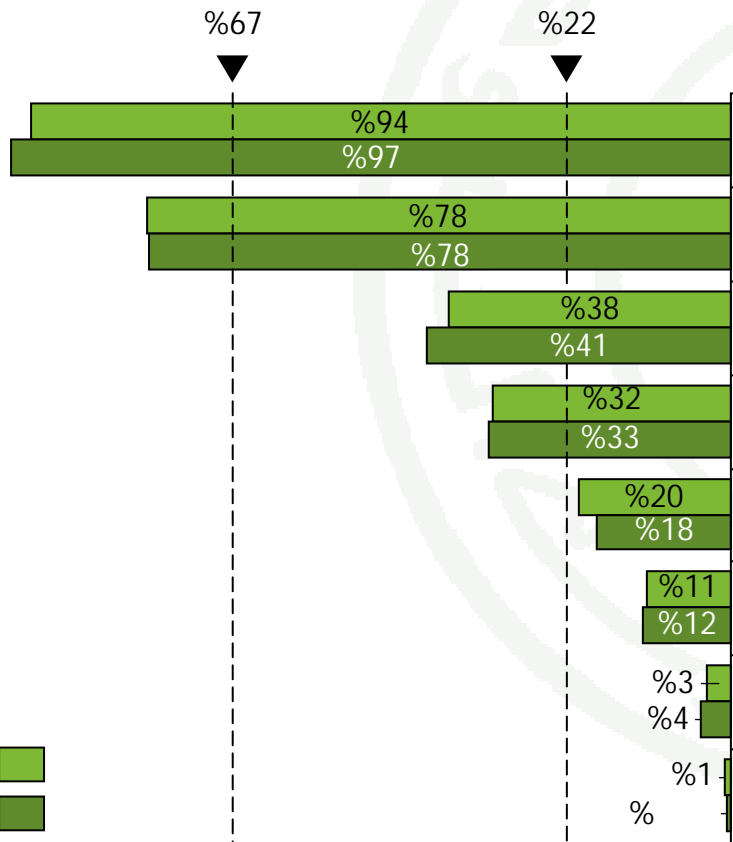


()





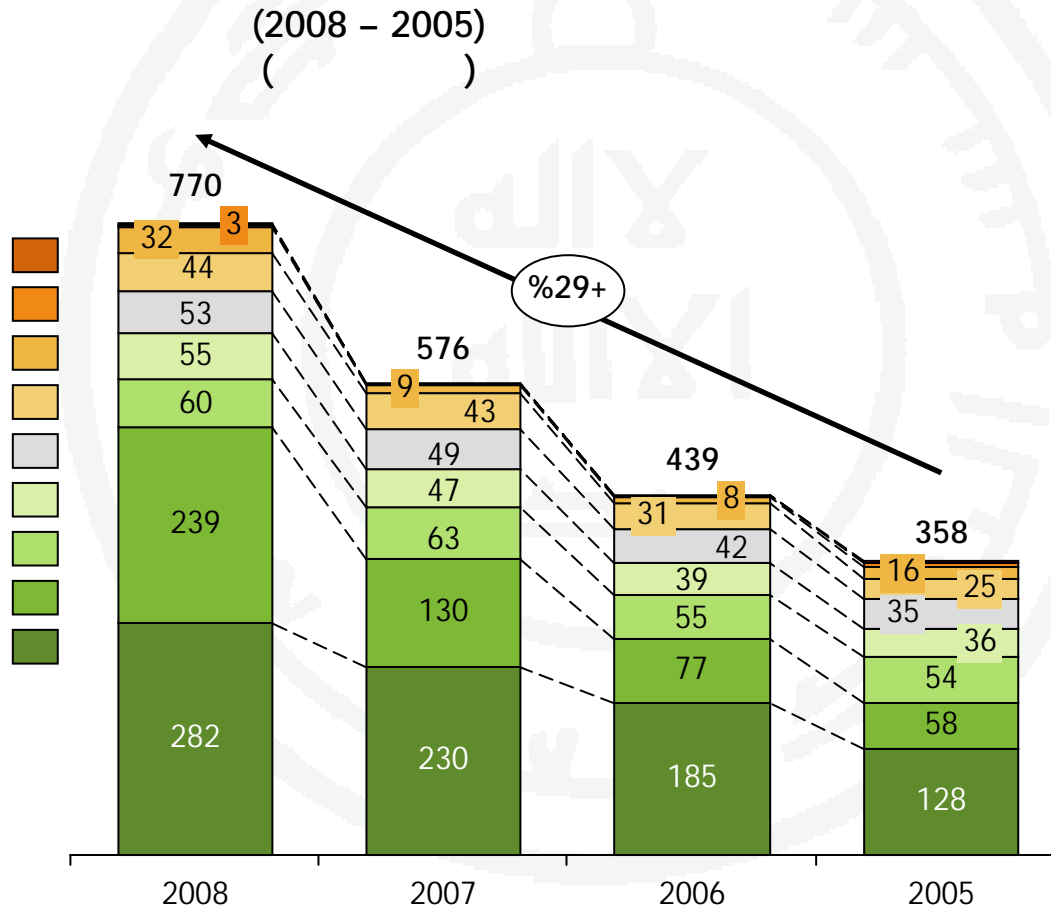
(2008 - 2007)





%
2008-2007

- %34
- %27.4
- %4.8
- %256.4
- %1.8
- %7.5
- %17.4
- %5.8-
- %84
- %22.6

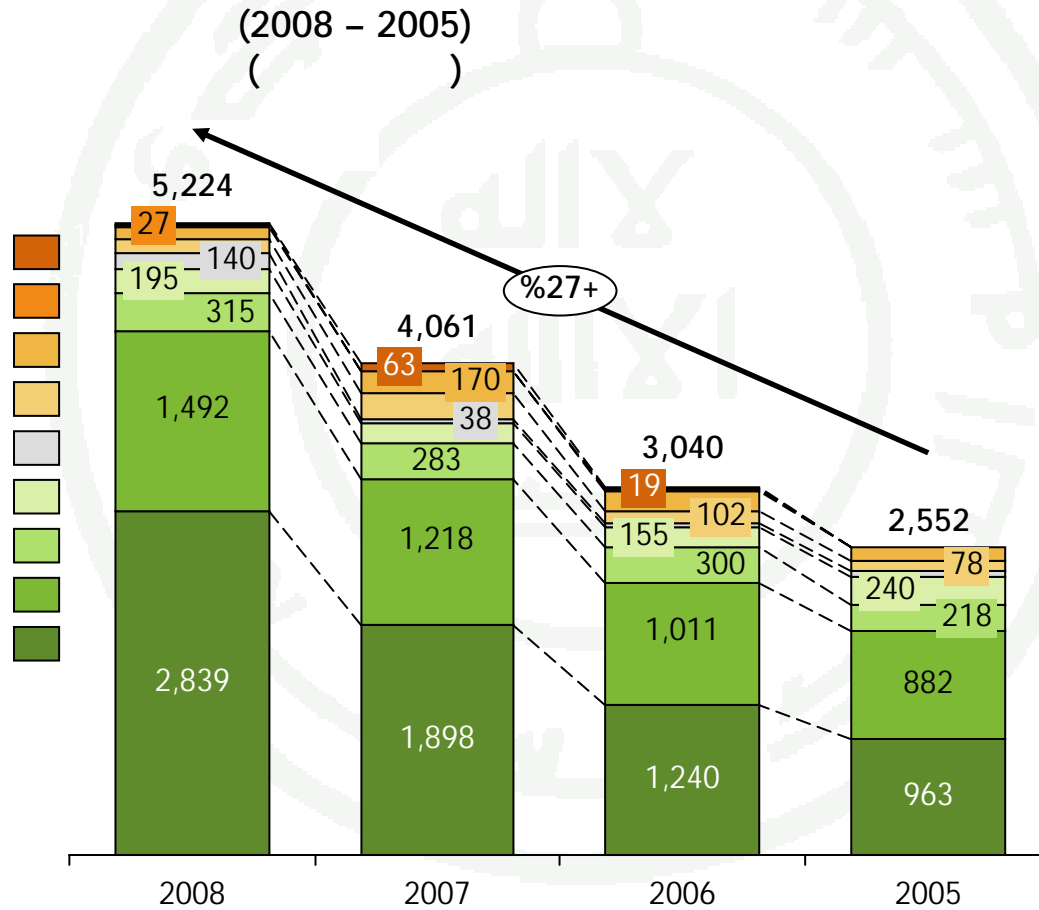


770	2008
576	2007
439	2006
358	2005
282	2008
230	2007
185	2006
128	2005
239	2008
130	2007
77	2006
58	2005
60	2008
63	2007
55	2006
36	2005
55	2008
47	2007
39	2006
54	2005
53	2008
49	2007
42	2006
35	2005
44	2008
43	2007
31	2006
25	2005
32	2008
9	2007
8	2006
16	2005
3	2008

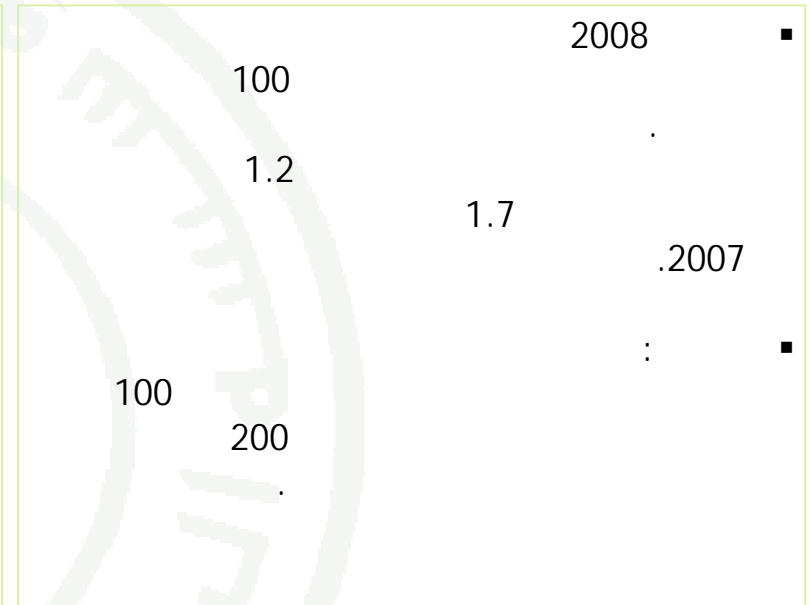
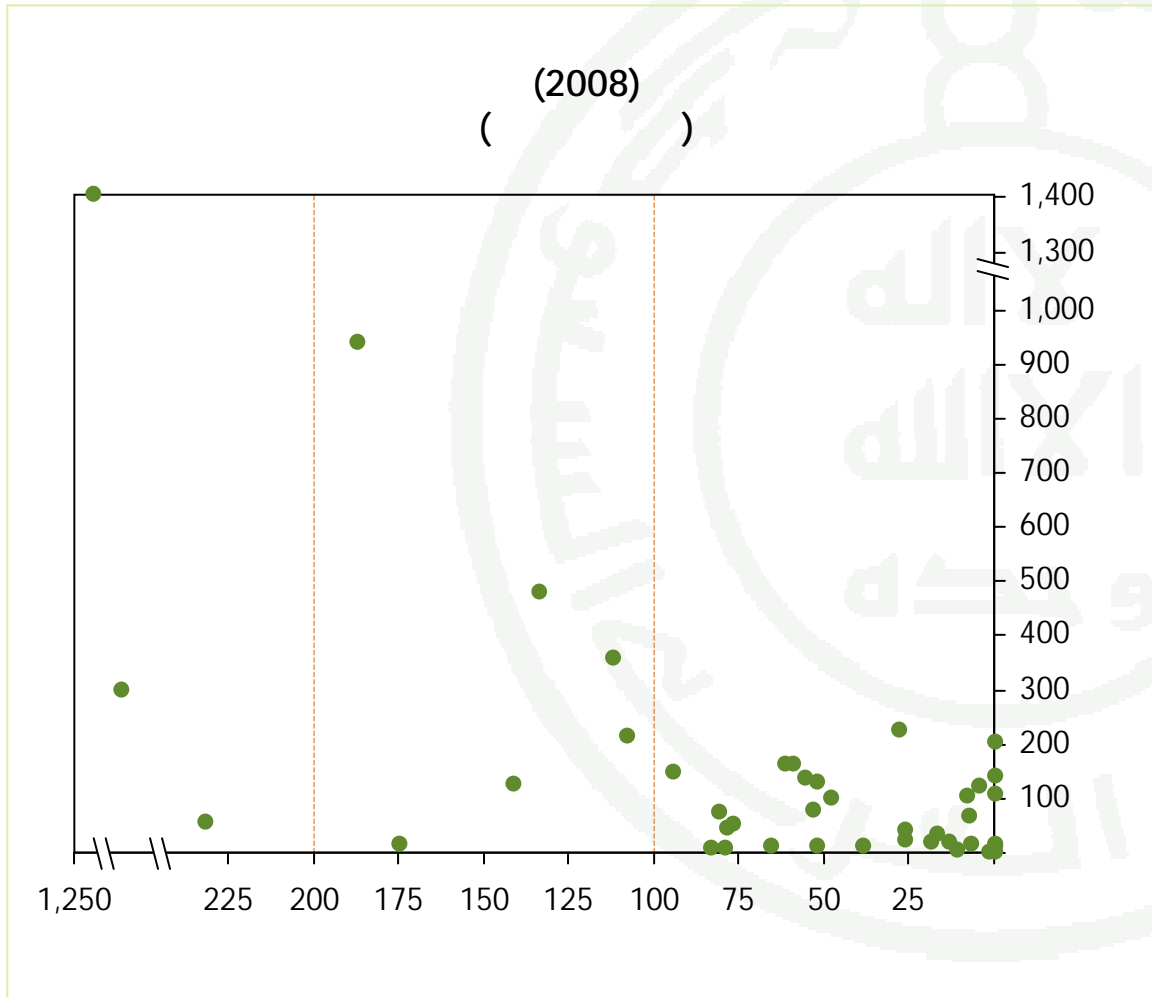


$\frac{\%}{2008-2007}$
%29

- %81.7-
- %331.3
- %45.9-
- %49.1-
- %268.9
- %17.6
- %11.3
- %22.5
- %49.6



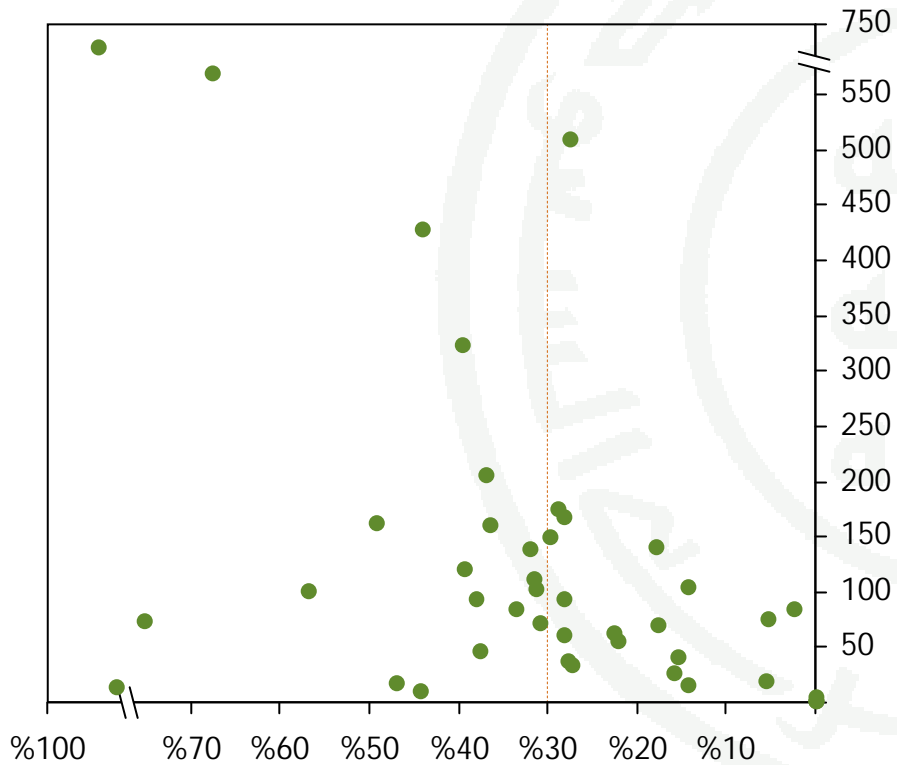
2007	4.0	29
2008	5.2	2008
77	83	
2008	2007	
2008		



	(2008)	
21	50	
13	100	50
4	150	100
2	200	150
2	500	200
1		500



(2008)



.2008

5447

45

33

30

79

30

%		%		%		(2008)
%27	1,453	%38	301	%25	1,152	
%28	1,554	%29	234	%28	1,320	
%45	2,440	%33	264	%47	2,176	
%100	5,447	%100	799	%100	4,648	



:

(2008 – 2005)

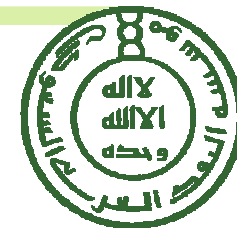
:1



(2008 – 2005)										:1
%	2008		2007		2006		2005			
	%		%		%		%			
% (8.0)	%4.9	531.3	%6.7	577.3	%8.4	579.6	%8.2	424.0		
%4.2	%23.3	2,542.1	%28.4	2,440.2	%27.7	1,920.2	%30.8	1,587.3		
%7.6	%7.3	798.4	%8.6	742.2	%11.1	769.2	%12.5	643.5		
%16.6	%5.7	619.6	%6.2	531.6	%6.2	431.4	%7.4	382.0		
%21.0	%1.3	138.5	%1.3	114.5	%1.8	126.1	%2.6	135.1		
% (31.8)	%1.9	208.2	%3.6	305.3	%1.8	126.7	%2.4	121.0		
%42.2	%6.2	682.1	%5.6	479.7	%7.8	543.7	%5.8	296.4		
%6.3	%50.6	5,520.1	%60.5	5,190.7	%64.8	4,497.1	%69.7	3,589.9		
%56.8	%44.0	4,805.2	%35.7	3,065.0	%32.0	2,222.2	%26.6	1,370.3		
%81.6	%5.4	593.7	%3.8	327.0	%3.1	217.9	%3.7	193.2		
%27	%100	10,918.9	%100	8,582.7	%100	6,937.3	%100	5,153.4		

(2008 - 2005)

:3 2



(2008 - 2005)						:2
%	2008	2007	2006	2005		
	%	%	%	%		
%14.2-	%0.31	%0.37	%0.34	%0.30		
%26.4	%0.27	%0.22	%0.17	%0.12		
%46.4	%0.03	%0.02	%0.02	%0.02		
%2.6	%0.62	%0.61	%0.53	%0.44		

(2008 - 2005)						:3
%	2008	2007	2006	2005		
%2.8	222.5	216.5	189.9	155.3		
%51.5	193.7	127.8	93.8	59.3		
%75.5	23.9	13.6	9.2	8.4		
%23.0	440.1	357.9	292.9	223.0		

(2008 – 2005)

:4



(2008 – 2005)									
%	2008		2007		2006		2005		
	%		%		%		%		
%(0.9)	%3.0	217.3	%4.0	219.2	%5.6	243.4	%5.8	182.7	
%7.0	%33.6	2,458.7	%41.4	2,297.3	%41.7	1,814.1	%46.9	1,486.9	
%13.4	%1.3	95.4	%1.5	84.1	%1.9	80.8	%2.2	69.2	
%18.7	%2.8	201.5	%3,1	169.8	%2.9	124.4	%3.6	112.7	
%54.2	%0.1	5.5	%0.1	3.6	%0.1	4.3	%0.1	4.0	
%(60.8)	%	0.9	%	2.4	%		%	0.1	
%25.2	%1.7	122.2	%1.8	97.6	%1.9	84.2	%1.8	56.8	
%7.9	%42.4	3,101.6	%51.8	2,873.9	%54.1	2,351.2	%60.4	1,912.5	
%56.1	%51.2	3,750.9	%43.3	2,403.1	%42.4	1,842.5	%34.9	1,106.6	
%75.5	%6.4	468.2	%4.8	266.8	%3.5	153.2	%4.7	149.7	
%32	%100	7,320.6	%100	5,543.8	%100	4,346.9	%100	3,168.8	

(2008 – 2005)

:5



(2008 – 2005)						:5
%	2008	2007	2006	2005		
	%	%	%	%		
%7.7	%40.9	%38.0	%42.0	%43.1		
%2.7	%96.7	%94.1	%94.5	%93.7		
%5.4	%11.9	%11.3	%10.5	%10.8		
%1.8	%32.5	%31.9	%28.8	%29.5		
%27.5	%4.0	%3.1	%3.4	%2.9		
%(42.5)	%0.4	%0.8	%	%0.1		
%(11.9)	%17.9	%20.3	%15.5	%19.2		
%1.5	%56.2	%55.4	%52.3	%53.3		
%(0.4)	%78.1	%78.4	%82.9	%80.8		
%3.8	%67.0	%64.6	%62.4	%60.9		

(2008 – 2005)

:6



(2008 – 2005)									
%	2008		2007		2006		2005		
	%		%		%		%		
%7.5	%6.9	52.8	%8.5	49.2	%9.5	41.8	%9.7	34.7	
%22.6	%36.6	281.6	%39.9	229.6	%42.1	185.2	%35.9	128.4	
%5.8	%7.7	59.5	%11.0	63.2	%12.5	54.8	%15.2	54.4	
%17.4	%7.1	54.9	%8.1	46.8	%8.8	38.5	%10.0	35.6	
%27.4	%0.3	2.4	%0.3	1.9	%0.5	2.3	%0.6	2.0	
%4.8	%0.4	3.0	%0.5	2.9	%0.2	0.9	%1.1	3.9	
%1.8	%5.8	44.3	%7.5	43.5	%7.1	31.4	%6.9	24.6	
%14.1	%64.8	498.7	%75.9	437.1	%80.7	354.8	%79.3	283.7	
%84.0	%31.0	238.9	%22.5	129.8	%17.5	76.9	%16.1	57.6	
%256.4	%4.2	32.0	%1.6	9.0	%1.8	7.7	%4.6	16.4	
%34	%100	769.6	%100	575.9	%100	439.4	%100	357.7	

(2008 - 2005)

:7



(2008 - 2005)									
%	2008		2007		2006		2005		
	%		%		%		%		
%(45.9)	%2	92.0	%4	170.2	%6	169.8	%4	111.7	
%22.5	%29	1,492.4	%30	1,217.9	%33	1,010.5	%35	882.0	
%11.3	%6	314.9	%7	283.0	%10	299.9	%9	217.7	
%17.6	%4	195.1	%4	165.9	%5	154.9	%9	240.2	
%(81.7)	%	11.5	%2	62.8	%1	18.3	%1	12.8	
%331.3	%1	26.5	%	6.2	%	9.0	%	1.2	
%(49.1)	%2	111.7	%5	219.2	%3	102.2	%3	78.1	
%5.6	%43	2,244.1	%52	2,125.3	%58	1,764.9	%60	1,543.7	
%49.6	%54	2,839.2	%47	1,897.9	%41	1,240.4	%38	963.0	
%268.9	%3	140.3	%1	38.0	%1	34.9	%2	44.9	
%29	%100	5,223.6	%100	4,061.2	%100	3,040.2	%100	2,551.6	